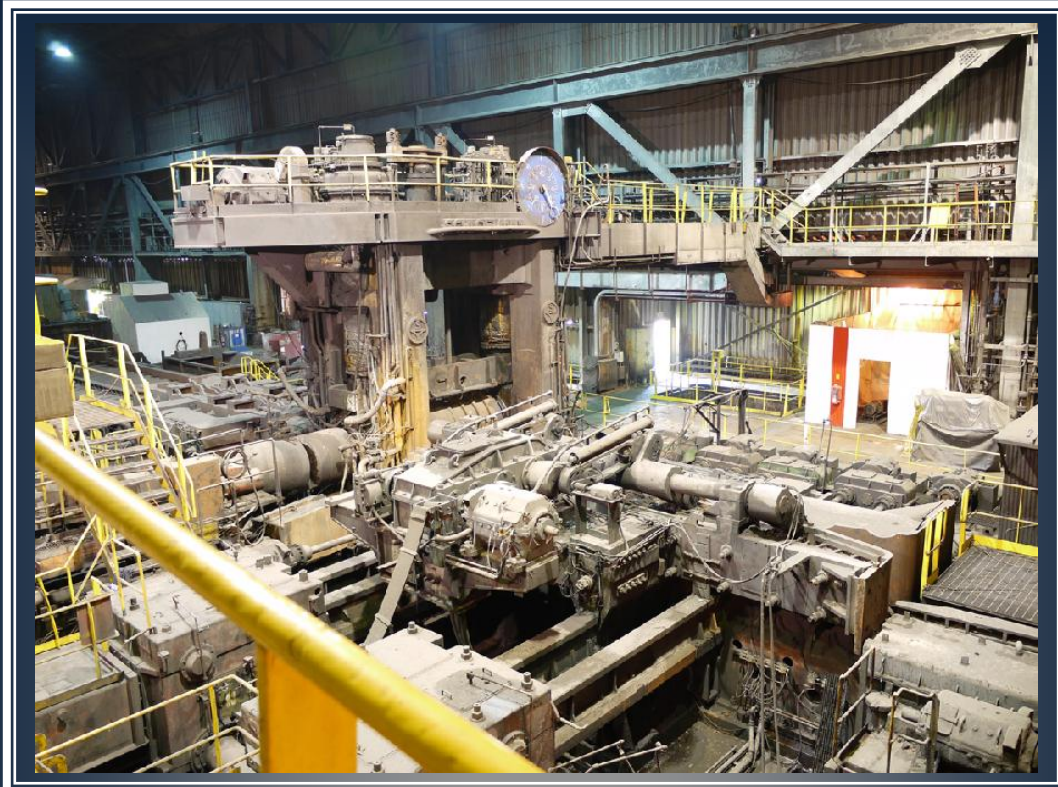


Heavy Bloom/Billet Mill Facility



MANUFACTURER: Schloemann
AGE: 1972

PRODUCTS:

Billets and Round Corner Squares for automotive, forging, and construction grade bars

EQUIPMENT:

Salem 1997 Walking Beam Natural Gas Reheat Furnace
54" x 102" 2 High Reversing Blooming Mill driven by 2 – 5000 HP DC, 35-70 RPM motors
Linde Hot Scarfer
1000T Bloom Shear
6 Stand H-V 30"-26" Billet Mill, 1750 HP DC Motor per stand
36 sq. in. Flying Billet Shear driven by 4 – 375 HP DC Motors
Hot Turnover Transfer Billet Cooling Bed
2 - Dog and Chain Type Cooling-Transfer Beds
Billet Inspection and Conditioning Facility



Contact DAVID R. DiBENEDETTO, SR. at TDI GROUP, LLC

(Office) 412-826-4950 Ext. 205 • drd@tdigrp.com

Visit our website

www.tdigrp.com