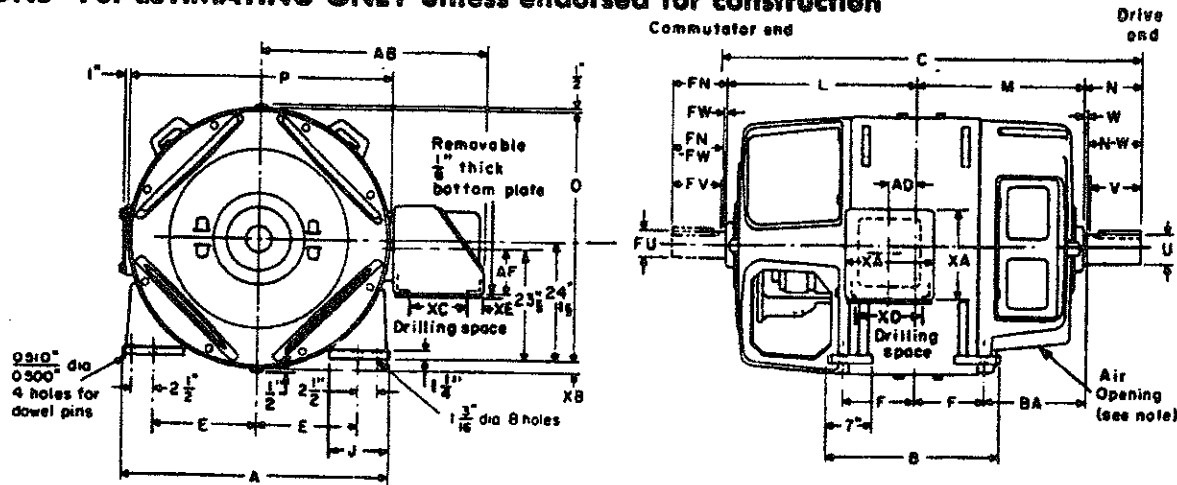


DIMENSIONS—For ESTIMATING ONLY unless endorsed for construction



Frame	Approx Net Wt in Lb	KEYWAYS (Drive End or Commutator End)		Dimensions in Inches																							
		Width	Depth	Key Length	MOUNTING			SHAFT									A	B	C*	J	L	M	O	P	AD	XB	
					E	F	BA	N	N-W	U	V	W	FN	FN-FW	FU	FV											FW
7452	10500	1 1/2	3/4	10	2 1/2	1 1/4	16 1/2	12 3/4	12	6	1 1/4	3/4	12 3/4	12	6	1 1/4	3/4	52	27 1/2	70 3/4	14	30 1/2	27 3/4	49 3/4	51 1/4	5 1/4	1 3/4
7512	11300	1 1/2	3/4	10	2 1/2	1 1/4	16 1/2	12 3/4	12	6	1 1/4	3/4	12 3/4	12	6	1 1/4	3/4	52	30 1/2	74 3/4	14	32 1/2	28 1/4	49 3/4	51 1/4	7 3/4	1 3/4
7513	12000	1 1/2	3/4	10	2 3/4	1 1/4	16 1/2	12 3/4	12	6	1 1/4	3/4	12 3/4	12	6	1 1/4	3/4	55 1/4	30 1/2	74 3/4	14	33 1/2	28 1/4	50 3/4	53 1/4	5 1/4	1 3/4

NOTE: Self-ventilated air flow; air enters at commutator end, discharge at drive end. Separately ventilated machines may have air flow reversed, air inlet at drive end and discharge at commutator end. For dimensions for 9000 Frame series, and footnotes for 7000, 8000 and 9000 Frame series, see reverse side.

CONDUIT-BOX DIMENSIONS

Fig. No.	Frame Series	Dimensions in Inches						Fig. No.	Frame Series	Dimensions in Inches					
		AB	AF	XA	XC	XD	XE			AB	AF	XA	XC	XD	XE
1	7513, 7583, 7663	4 1/4	7/8	1 3/4	1 1/2	1 1/2	1 1/2	1	8782, 8832, 8834, 8836	4 1/4	7/8	1 3/4	1 1/2	1 1/2	1 1/2
	7452, 7512, 7514, 7516, 7582	4 0/8	7/8	1 3/4	1 1/2	1 1/2	1 1/2		8543, 8623, 8743, 8833	4 9/8	12	1 8	1 4 1/4	1 5 1/8	1 1 1/8
	7584, 7686, 7662, 7664, 7666	4 0/8	7/8	1 3/4	1 1/2	1 1/2	1 1/2		8482, 8582, 8584, 8586, 8662	4 7/8	12	1 8	1 4 1/4	1 5 1/8	1 1 1/8
									8664, 8666, 8742, 8744, 8746	4 7/8	12	1 8	1 4 1/4	1 5 1/8	1 1 1/8
2	7513, 7583, 7663	4 4 1/8	12	1 8	1 4 1/4	1 5 1/8	1 1 1/8	2	8782, 8832, 8834, 8835	4 7/8	12	1 8	1 4 1/4	1 5 1/8	1 1 1/8
	7452, 7512, 7514, 7516, 7582	4 3 1/8	12	1 8	1 4 1/4	1 5 1/8	1 1 1/8		8543, 8623, 8743, 8833	5 3/8	12	1 8	1 8 1/8	1 5 1/8	1 1 1/8
	7584, 7686, 7662, 7664, 7666	4 3 1/8	12	1 8	1 4 1/4	1 5 1/8	1 1 1/8		8482, 8582, 8584, 8586, 8662	5 1/8	12	1 8	1 8 1/8	1 5 1/8	1 1 1/8
3	See supplementary outline of conduit box						3	See supplementary outline of conduit box							
	8543, 8623, 8743, 8833	4 5 1/8	7/8	1 3/4	1 1/2	1 1/2		1 1/2	8782, 8832, 8834, 8836	5 1/8	12	1 8	1 8 1/8	1 5 1/8	1 1 1/8
4	8482, 8582, 8584, 8586, 8662	4 4 1/8	7/8	1 3/4	1 1/2	1 1/2	1 1/2	4	See supplementary outline of conduit box						
	8664, 8666, 8742, 8744, 8746	4 4 1/8	7/8	1 3/4	1 1/2	1 1/2	1 1/2								

From 36C695417AA
36C695418AA
36C69597AB

Data subject to change without notice