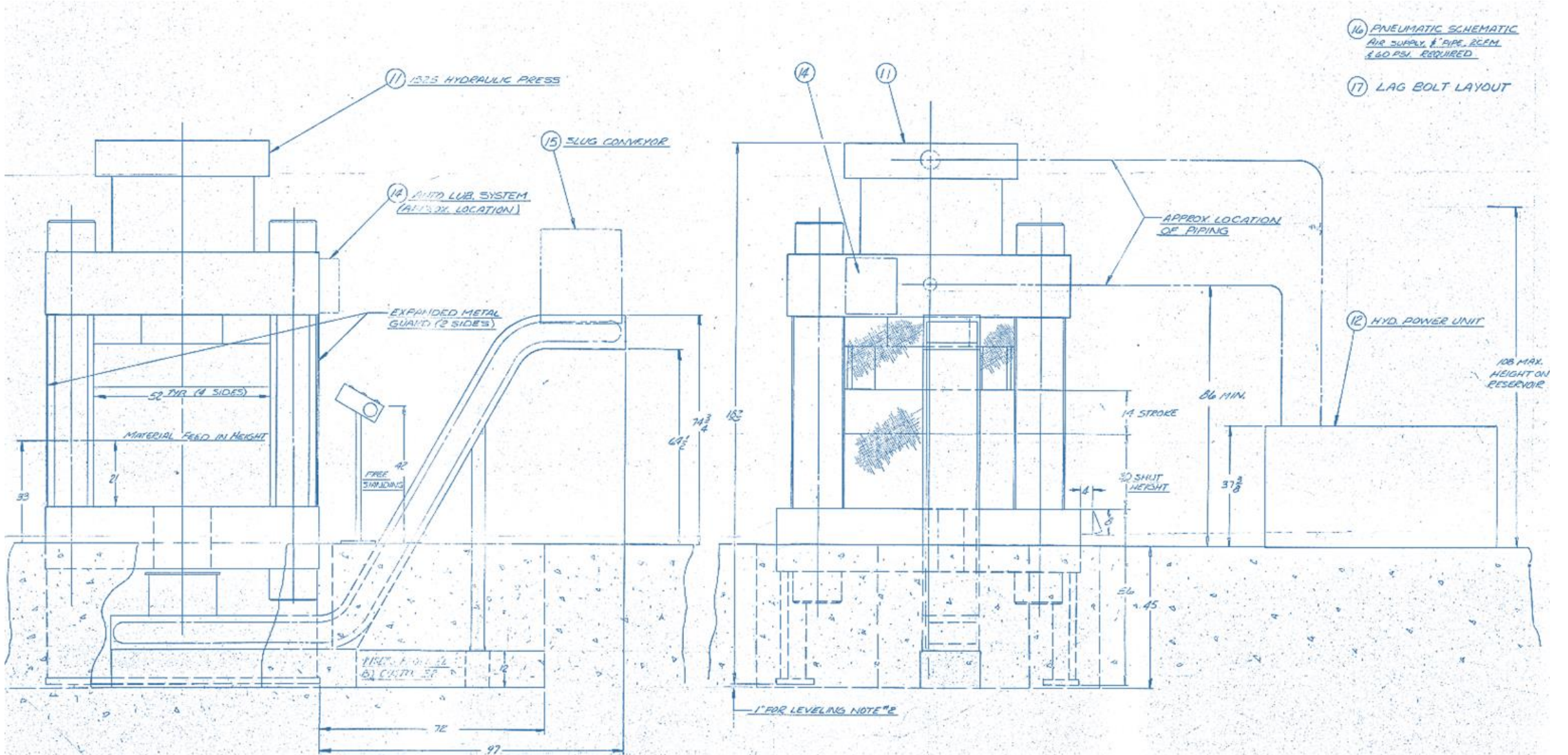


# 1525 Ton Hydraulic Punch and Shear

Reference #64450





**Make:** Advanced Machine Design Co.

**Model:** 1525 TP

**Year:** 1981

**Serial:** 8103

**General Specifications:**

Open Height: 44"

Shut Height: 30"

Stroke: 14"

Distance between Columns L-R: 54"

Distance between Columns F-B 54"

Size of Base Platen: 89" x 96"

Size of Main Cylinder Flange: 89" x 89"

Rapid Approach Speed: 309" / min.

Full Tonnage Piercing Speed: 71" / min.

Rapid Return Speed: 309" / min.

28-30 Pieces per minute

44 Work Strokes/minute (less feeding and gauging time)

Hydraulic Power Pack, complete with 300 HP AC Motor: (1200 Gallon)

\*Machine previously used to punch and shear railroad tie plates – 26-45' long