

# Leveraging Your Asset Position with Experienced Equipment

Presented by:  
Scott Taylor



# Leveraging Your Asset Position with Experienced Equipment

Leading provider of Surplus Mechanical & Electrical  
Equipment in the Metals Industry

Specialize in Supplying Used and Remanufactured  
Equipment & Supporting Services

Increased Involvement in Refurbishment of Overhead  
Cranes & Crane Control Components

# Leveraging Your Asset Position with Experienced Equipment

What exactly does this mean?

“Leveraging Your Asset Position with Experienced Equipment”

Lower Capital Investment

Improve Delivery

Reduce Maintenance Costs

Meaning

# Leveraging Your Asset Position with Experienced Equipment

## Changing Technology

- Solid State DC Drive Packages
- Disc Brakes
- AC Variable Frequency Drives
- AC Variable Speed Motors
- Package Type Mechanical Components

# Leveraging Your Asset Position with Experienced Equipment

## **FACTS**

Plants are still using DC Cranes and Other Related Equipment

Some of these components can no longer be purchased new

# Leveraging Your Asset Position with Experienced Equipment

Used / Remanufactured Equipment

Safe – Viable

**OPTION**

Used / Remanufactured Equipment

# Leveraging Your Asset Position with Experienced Equipment

If you are a Plant Manager, Maintenance Manager or Purchasing Agent ask yourself the following questions:

1. Should I consider purchasing remanufactured equipment?
2. Can I truly save money without sacrificing quality and safety?

**The Answer: YES**

# Leveraging Your Asset Position with Experienced Equipment

This OPTION is commonly used throughout the industry

## REPUTABLE COMPANIES WILL

1. Uphold the Highest Safety Standards
2. Work with OEM's to Ensure Best Quality
3. Monitor Capital Expenditures

# Leveraging Your Asset Position with Experienced Equipment

## FOCUS

DC Overhead Cranes & Components

## REFURBISHED EQUIPMENT CONSIDERATIONS

Motors & Magnetic Shoe Brakes

DC Contactors & DC Control Panels

Resistors

Magnet Controllers

Limit Switches

Magnetic Reels / Take Up Reels

# Leveraging Your Asset Position with Experienced Equipment

## REFURBISHED EQUIPMENT CONSIDERATIONS

Magnets

Coil Grabs, Coil Tongs, C Hooks, Slab Tongs

Crane Wheels and Brake Wheels

Hook Blocks

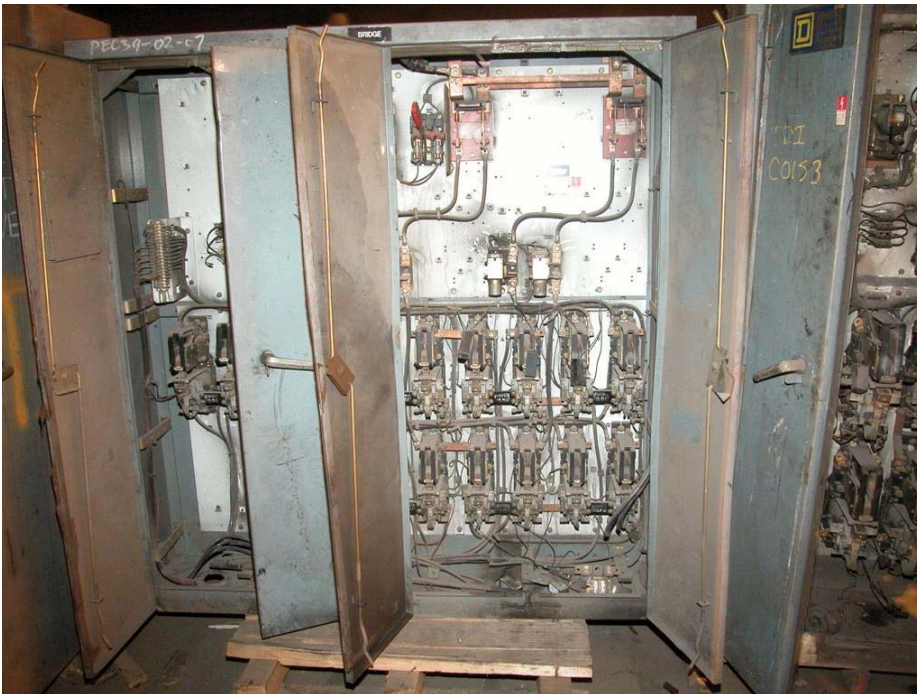
Cabs

Complete Replacement Trolleys

Complete Crane Replacement or Refurbishment

Specific Equipment

# Leveraging Your Asset Position with Experienced Equipment



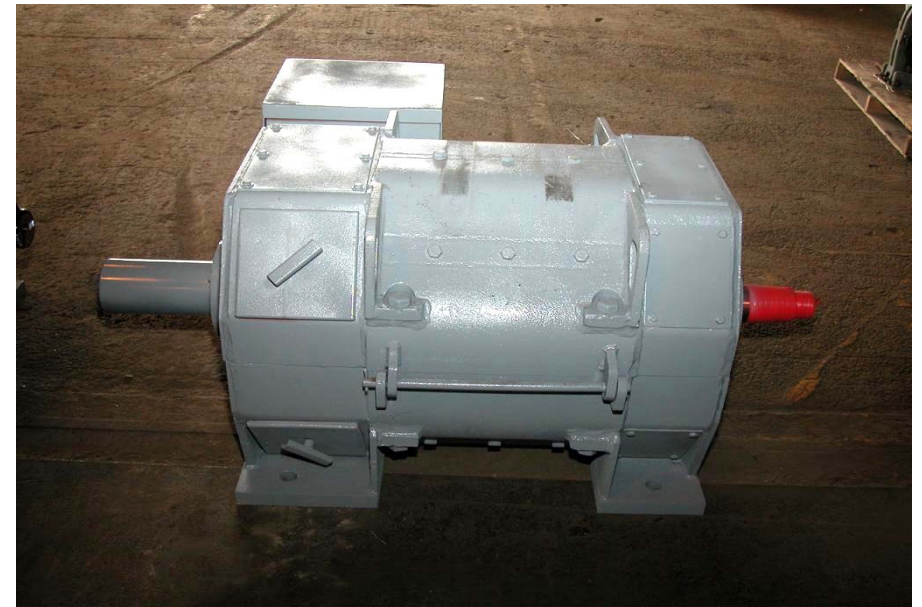
Photos

# Leveraging Your Asset Position with Experienced Equipment



Photos

# Leveraging Your Asset Position with Experienced Equipment



Photos

# Leveraging Your Asset Position with Experienced Equipment



Photos

# Leveraging Your Asset Position with Experienced Equipment

## OTHER OPTIONS

Acquire a New Crane

Install Refurbished Electrics, Motors & Brakes

Upgrade of Existing Control and Electric Components in Place

# Leveraging Your Asset Position with Experienced Equipment

## TYPICAL CRANE PROJECT

Determine Customer Needs

Class

Lifting Requirements

Clearances

Building Capacities

Power Requirements

Span Requirements

Control Point

Typical Project

# Leveraging Your Asset Position with Experienced Equipment

## CUSTOMER INVOLVEMENT

Initial Inspection of Used Crane

Reporting & Drawings

Refurbish Utilizing In-House Maintenance

# Leveraging Your Asset Position with Experienced Equipment

## “FRAME UP RESTORATION”

Crane is Stripped & Inspected  
Gear Boxes Torn Down & Inspected  
Bearings & Seals Replaced with New OEM

# Leveraging Your Asset Position with Experienced Equipment

## UP RATING

Achievable for Cranes 20 to 30 Years Old  
with Minimal or No Modifications

Recent Project – Uprate of approx. 20% with Zero  
Modifications

Complete Engineering Study to Support Uprate

# Leveraging Your Asset Position with Experienced Equipment

## PROJECT SUMMARY

- Complete Uprate & Refurbishment of a Bridge and Bridge Drive w/Respan of Minus Five Feet
- Customer Purchased a New Trolley – Special Application
- Refurbished Electric Motors, Brakes & Controls Provided
- Crane Converted from Cab Operation to Radio Control with Pendant Backup

# Leveraging Your Asset Position with Experienced Equipment

## PROJECT SUMMARY

- Uprate and Complete Refurbishment
- Four Girder, Two Trolley Ladle Crane Shortened Five Feet
- DC Voltage Crane Installed into an AC Voltage Building
- A Mix of New and Refurbished Control, Motors & Brakes Provided

# Leveraging Your Asset Position with Experienced Equipment

## OPTION

Can This Be An Option For Your Facility?

Maybe YES

Maybe NO

A Viable OPTION That Should Be Considered

